

Tutorial Install SEB E-LABSKY For Windows

Step Instalasi SEB

1. Download Aplikasi Exam Browser dan Konfigurasi SEB
2. Install Aplikasi Safe Exam Browser (SEB)
3. Install Konfigurasi SEB
4. Menampilkan Icon SEB Pada Dekstop
5. SEB Siap digunakan

1. Download Aplikasi Exam Browser dan Konfigurasi SEB

1.1 Download Exam Browser

Copy & Paste Link berikut di Web Browser / Double Klik

https://safeexambrowser.org/download_en.html

Keterangan :

* [Download Exam Browser Untuk Sistem Operasi Window 8, 10 dan 11](#)

Windows

Safe Exam Browser 3.3.0 for Windows

Safe Exam Browser 3.3.0 for Windows 8.1 and 10

SHA1: 2b5fbd87b84b62f00445a30c5a8f534f79d02f5f

[Download from GitHub project site.](#)

This feature update introduces live proctoring with Zoom, adds support for basic screen sharing in the integrated browser and fixes various issues reported by the community. Below a list of the most prominent new features and changes:

- Added live proctoring support for Zoom and improved live proctoring integration with SEB Server.
- Added support for basic screen sharing in the integrated browser.
- Implemented temporary file download and upload directory for integrated browser.
- Improved error message for display monitoring.
- Improved generic start error message to always include the log files of the affected session.
- Updated browser engine to version 91.1.21 (Chromium version 91.0.4472.114).

See [release notes](#) for all changes and read the [manual](#) for more information.

* Download Exam Browser Untuk Sistem Operasi Window 7

Windows Legacy

Safe Exam Browser 2.4.1 for Windows

Safe Exam Browser 2.4.1 for Windows 7, 8.1 and 10

SHA1: aec3ef8a45a40942f8675e7ab77b896e1ce05dba

[Download from GitHub project site.](#)

SEB 2.4.1 for Windows is a maintenance release, which can be used if the refactored, more modern version SEB 3.0.1 misses a feature you need. SEB 2.4.1 fixes an issue which was reported to happen when using the SEB-Moodle Deeper Integration (available by default in Moodle 3.9 and as [plugin for Moodle 3.7 and 3.8](#)).

Please note our new update policy: We will only support the latest SEB version and will remove all older SEB versions after a grace period. Only with updated SEB versions you can achieve the best possible security and stability of e-assessments. **Before asking any support question or reporting a bug, install the latest SEB version and try to reproduce the issue with the most recent version.** We can't answer questions anymore when the SEB version isn't mentioned or when you don't confirm you tried it with the current version.

New in SEB 2.4.1:

- Fixed issue when the old browser window stayed open while reconfiguring with seb(s) link, together with the Firefox file open dialog. Should fix issues when using SEB-Moodle Deeper Integration.
- Implemented fix for VMware Windows Registry error: The Registry value for "Enable VMware Client Shade" will now only

* Download Exam Browser Untuk Sistem Operasi Machintos

macOS

Safe Exam Browser 2.3.2 for macOS

Current version of Safe Exam Browser for macOS 11, 10.15, 10.14, 10.13, 10.12, 10.11 (limited support* for 10.10, 10.9, 10.8 and 10.7)

Build 3140. SHA1: b5fa2826411aa8e8448b26ec8aa28d2d5c50aad4

[Download from GitHub project site.](#)

SEB 2.3.2 is a minor update for 2.3.1 with one bug fix:

- When running on macOS 11 Big Sur on Intel CPU based Macs (tested on macOS 11.2.3), system processes displaying UI in the foreground were not recognized as system applications and terminated by SEB or locked SEB (displaying a red lock screen) if SEB couldn't terminate them. Now system processes should be identified correctly both on Intel and Apple Silicon based Macs.
- SEB 2.3.1: Changed default setting for AAC to disabled, using a new settings key `enableMacOSAAC`.


SEB 2.3 added new capabilities, improved the user interface for students and exam administrators and fixed several issues:

- Support for Automatic Assessment Configuration (AAC) macOS Assessment Mode. AAC can be used optionally if running on macOS 10.15.4 or newer. Assessment Mode blocks various macOS features which shouldn't be accessible during exams. Also no other applications and processes running in the background can access the network while Assessment Mode is active.

1.2 Download Konfigurasi

Setelah Donwload SEB d lanjutkan Mendownload Konfigurasi SEB Window yang ada pada Elabsky

<https://elabsky-sma.labschool-unj.sch.id/>

 **KONFIGURASI SEB UNTUK WINDOW**
by Admin User - Monday, 7 June 2021, 3:04 PM

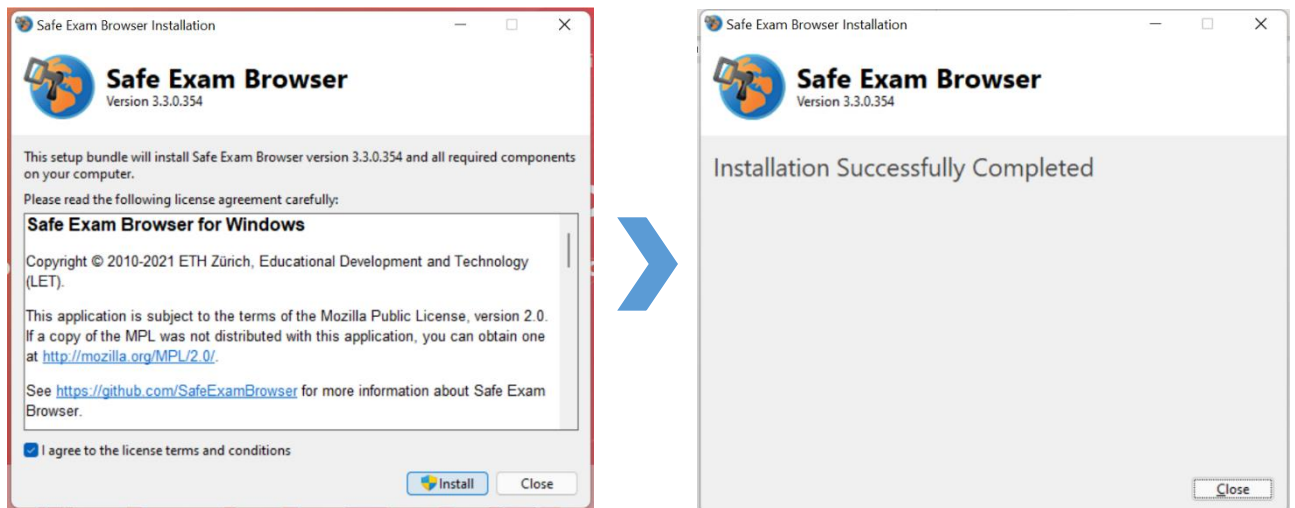
Langkah Penggunaan :

1. Download file SEB Config pada link dibawah
2. Install file yang sudah di download dengan cara **double click** pada file
3. Apabila ada Notifikasi Continue, klik **Pilihan Continue** untuk melanjutkan prosesnya.
4. SEB siap digunakan

<https://drive.google.com/drive/u/0/folders/ItLVvtziERpwxSxHS2O5gipUEv4wdSTg>

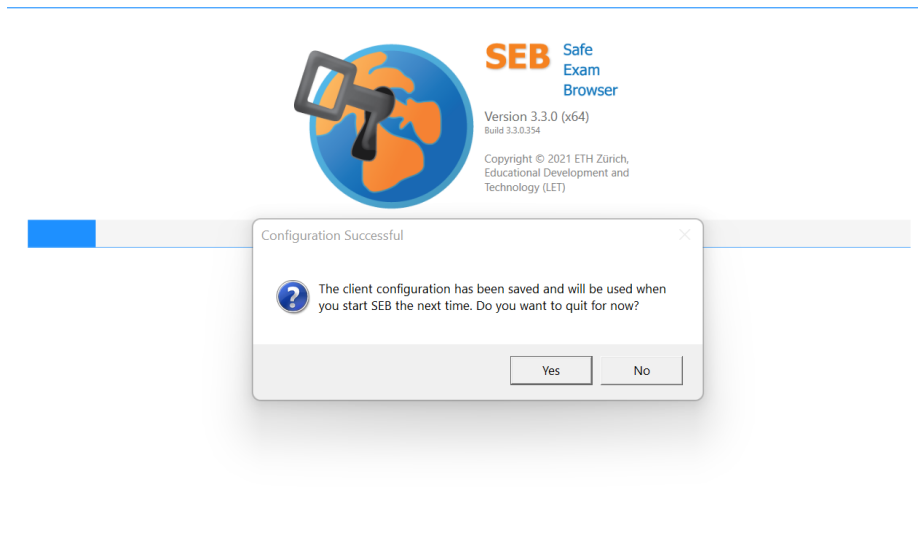
2. Install Aplikasi SEB yang sudah didownload

Lakukan installasi SEB sampai muncul keterangan berdasarkan pada gambar berikut :



3. Install Konfigurasi SEB yang sudah didownload

Double klik pada file yang sudah di download, kemudian Klik Tombol **No**



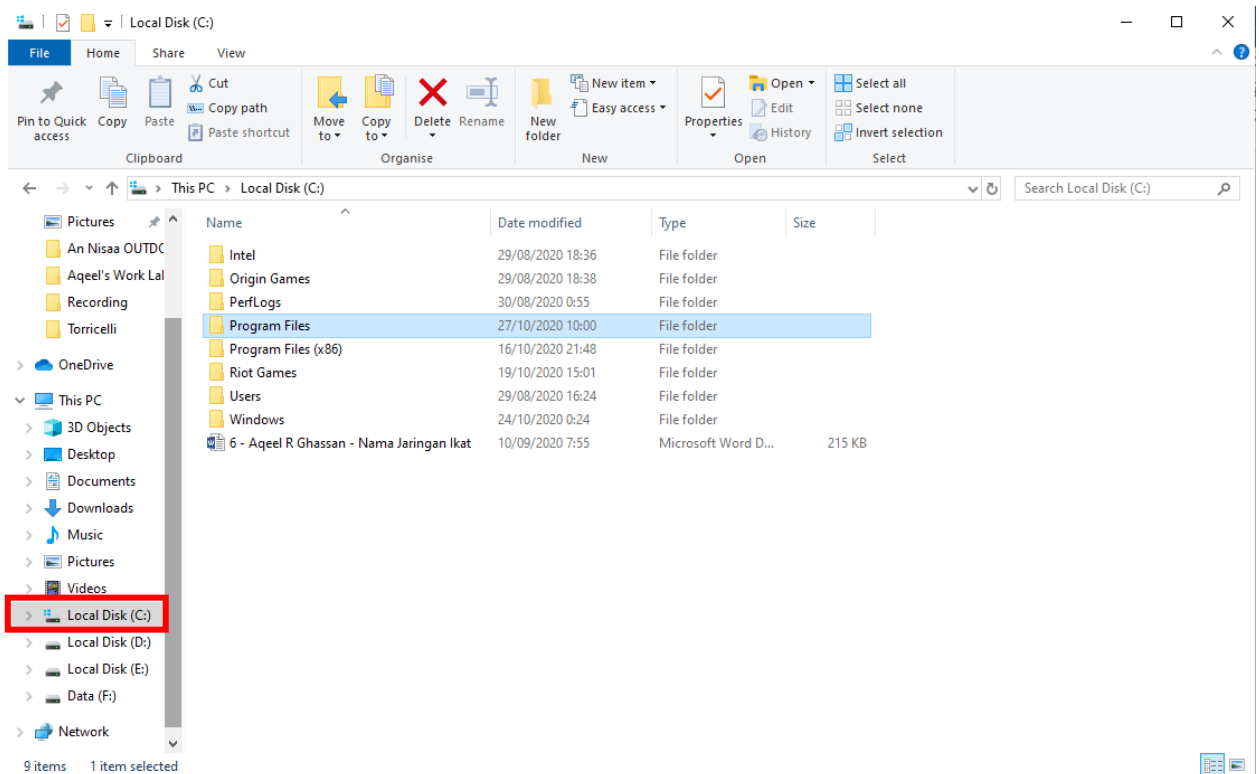
Notes :

Yes : Untuk keluar dari popup

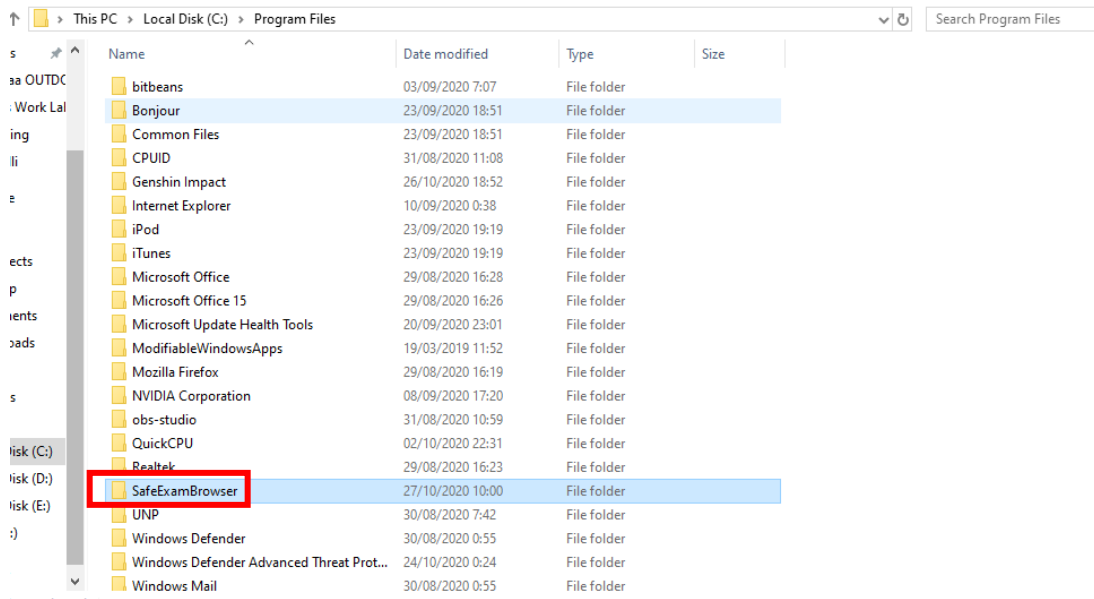
No : Untuk Masuk Ke tampilan E Learning

4. Menampilkan Icon SEB Pada Dekstop

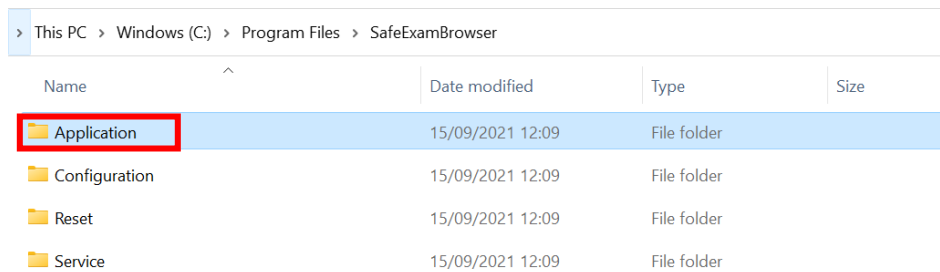
I. Masuk ke HDD/SSD System anda. Biasanya "Data C:" atau "Local Disk(C:)" dan Klik Program Files atau Program Files (x86)



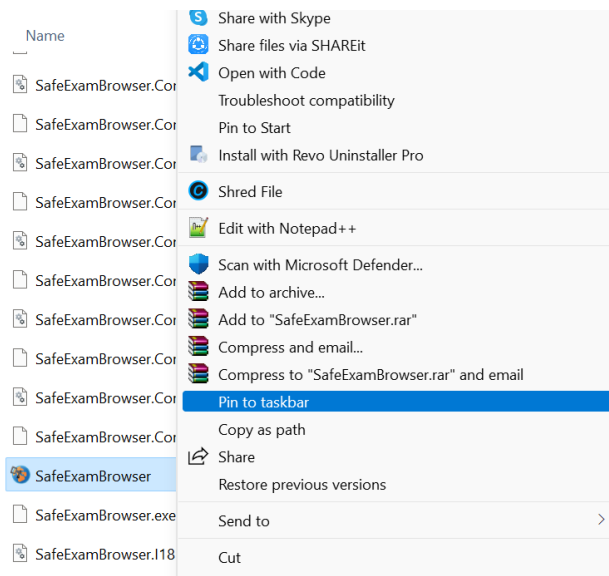
II. Cari Folder SafeExamBrowser dan Klik



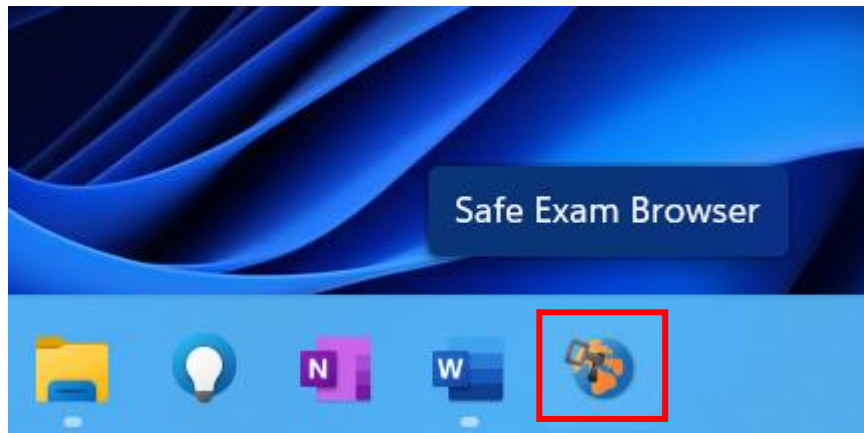
III. Klik Folder Application



IV. Cari Icon Safe Exam Browser kemudian klik kanan > Klik Pin Taksbar



V. Tampilan Safe Exam Browser Pada Taskbar



5. SELAMAT SEB SUDAH SIAP DIGUNAKAN

TUTORIAL SEB UNTUK MAC

Step Instalasi SEB

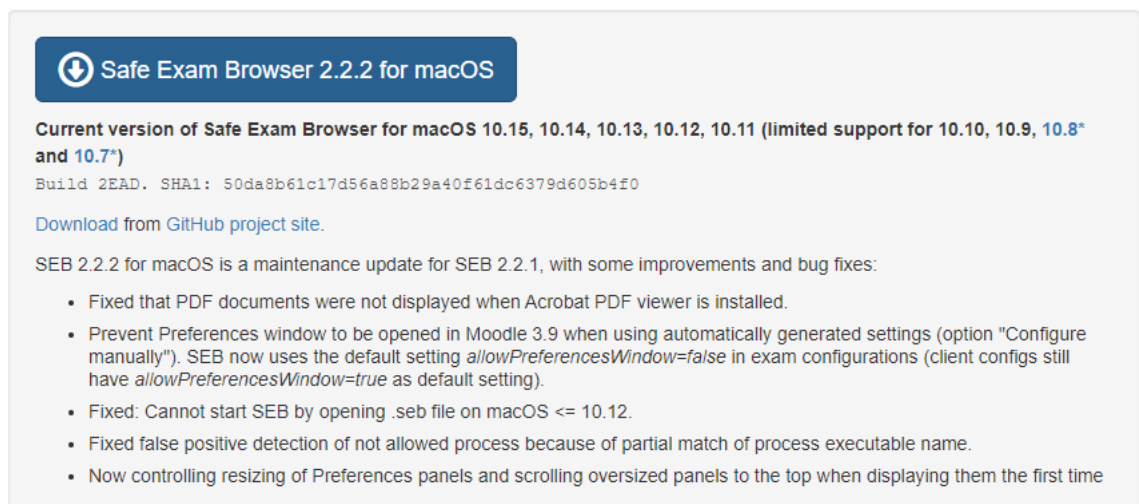
1. Download Aplikasi Exam Browser dan Konfigurasi SEB Mac
2. Install Aplikasi Safe Exam Browser (SEB) For Mac
3. Install Konfigurasi SEB Mac
4. SEB Siap digunakan


1. Download Aplikasi Exam Browser dan Konfigurasi SEB

1.1 Download SEB

Buka link https://safeexambrowser.org/download_en.html, download setup untuk MacOS

macOS



 Safe Exam Browser 2.2.2 for macOS

Current version of Safe Exam Browser for macOS 10.15, 10.14, 10.13, 10.12, 10.11 (limited support for 10.10, 10.9, 10.8* and 10.7*)

Build 2EAD. SHA1: 50da8b61c17d56a88b29a40f61dc6379d605b4f0

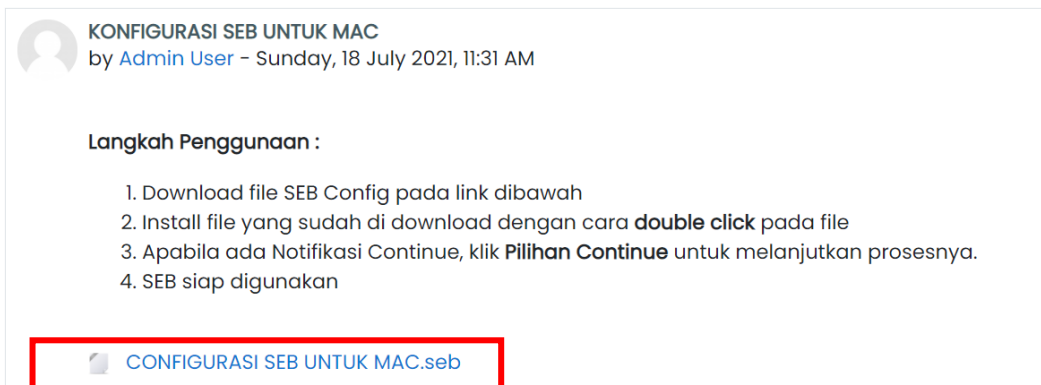
[Download from GitHub project site.](#)


SEB 2.2.2 for macOS is a maintenance update for SEB 2.2.1, with some improvements and bug fixes:

- Fixed that PDF documents were not displayed when Acrobat PDF viewer is installed.
- Prevent Preferences window to be opened in Moodle 3.9 when using automatically generated settings (option "Configure manually"). SEB now uses the default setting `allowPreferencesWindow=false` in exam configurations (client configs still have `allowPreferencesWindow=true` as default setting).
- Fixed: Cannot start SEB by opening .seb file on macOS <= 10.12.
- Fixed false positive detection of not allowed process because of partial match of process executable name.
- Now controlling resizing of Preferences panels and scrolling oversized panels to the top when displaying them the first time

1.2 Download Konfigurasi SEB Untuk Mac


di lanjutkan Mendownload Konfigurasi SEB Mac yang ada pada Elabsky <https://elabsky-sma.labschool-unj.sch.id/>



 **KONFIGURASI SEB UNTUK MAC**
by [Admin User](#) - Sunday, 18 July 2021, 11:31 AM

Langkah Penggunaan :

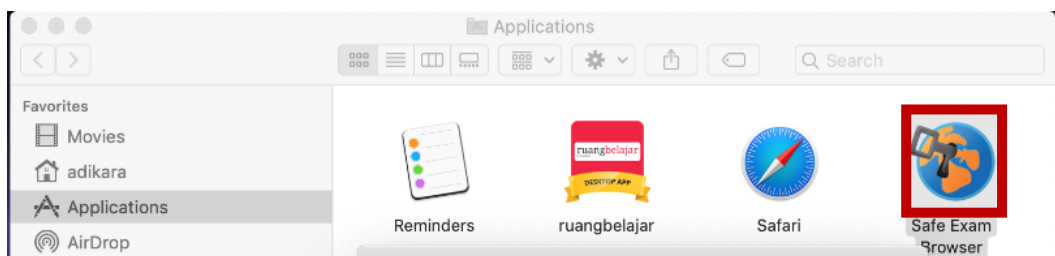
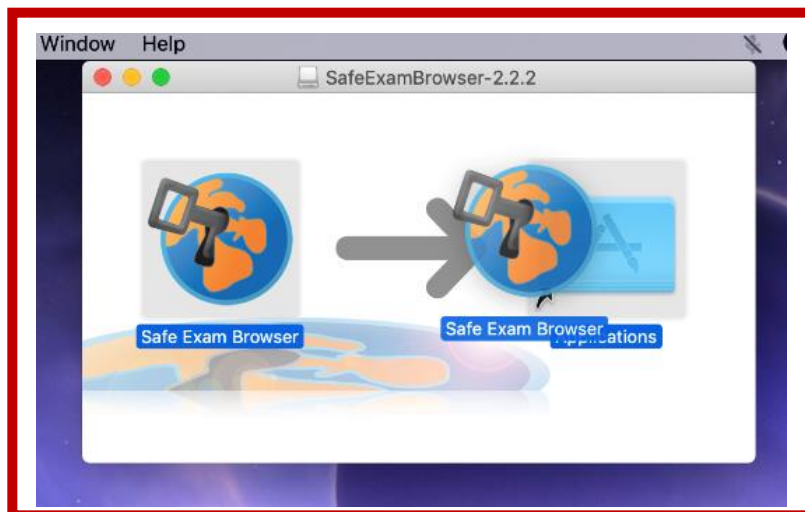
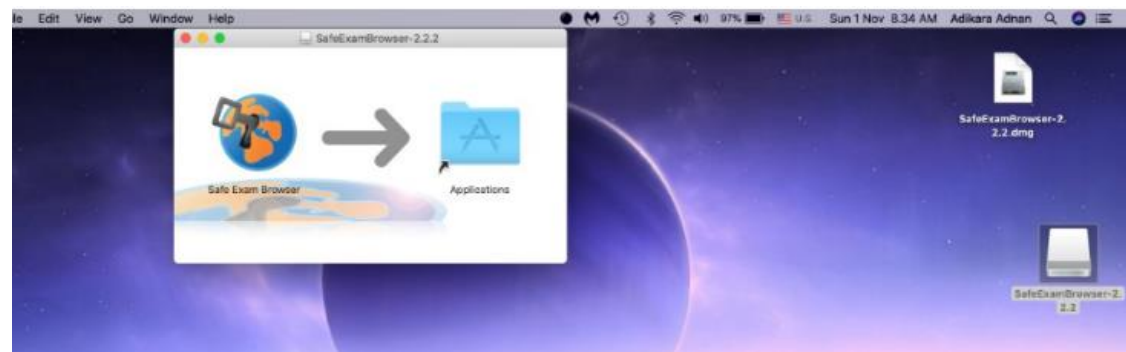
1. Download file SEB Config pada link dibawah
2. Install file yang sudah di download dengan cara **double click** pada file
3. Apabila ada Notifikasi Continue, klik **Pilihan Continue** untuk melanjutkan prosesnya.
4. SEB siap digunakan

 [CONFIGURASI SEB UNTUK MAC.seb](#)

2. Install Aplikasi Exam Browser (SEB)

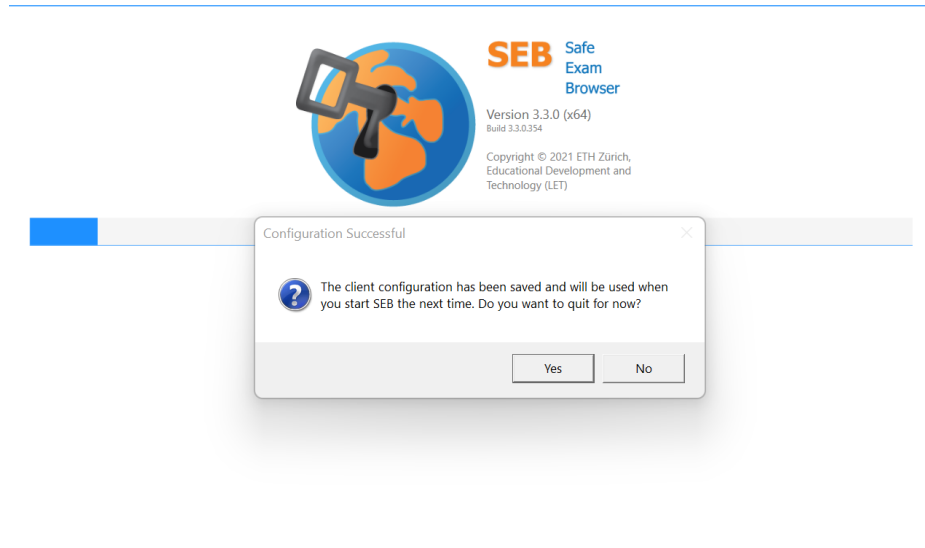
Setelah mendownload, buka file .dmg seperti biasa lalu install seperti Gambari berikut :

- I. Klik File .dmg yang sudah d download sampai muncul tab notifikasi dan drag n drop SEB



3. Install Konfigurasi SEB Mac

Setelah Proses Instalasi SEB selesai selanjutnya Install SEB Konfigurasi yang sudah di download sebelumnya. Double klik pada file yang sudah di download, kemudian Klik Tombol **No**



Notes :

Yes : Untuk keluar dari popup

No : Untuk Masuk ke tampilan E Learning

4. SELAMAT SEB SUDAH SIAP DIGUNAKAN